

\$5.70

girlfriend.com.au

Girlfriend

SNAP CRACKLE HOT!

Which brekkie cereal is your boy?

Jumping on your bed...

• OTHER PUMB STUFF THAT'S GOOD FOR YOU!

Catwalks & catfights!

Behind the scenes of ANTM

ARE YOU BEING WATCHED? TEENS WHO STALK

So Craptastic! GUILTY PLEASURES WE ♥

THE NICE GIRLS' GUIDE TO DUMPING

Emma Watson SPELLS, SWARTS + STYLE

DRAMA, DRAMA, DRAMA! IS YOUR LIFE A SOAP OPERA?



TWILIGHT TORSOS

('NUFF SAID!)

Ctrl. Alt. Refresh. Spring clean your life!

Even with \$20 million in the bank, Emma had to use her brains to earn her uni placement.



PRINTED ON 100% RECYCLED PAPER
SEPTEMBER 2009 \$5.70 (INC. GST)



WIN 5 X \$1000 PURR WARDROBES



Beauty know-it-all

The smoky-eye workshop

One concept. Three experts. Three different looks.

Not surprisingly the most asked makeup question is not how to get a sequined eyebrow. Or a bold blue lip. It's ye olde smoky eye.



SMOKY DAYS

You know how sometimes you wanna make an effort, without looking too made up? Enter: daytime smoky eye. Inika Mineral Cosmetics makeup artist, Cathryn McCann (1300 146 452) lays it down for us.

1 Create a base by covering the eyelid with foundation. Mineral makeup is especially good for this as it has staying power.

2 Dip a flat bristle shadow brush into a peachy colour and tap off the excess. Blend the colour over the whole eyelid.

3 Choose a chocolate eyeliner and etch along the upper lash line, then continue underneath the eye just in the corner.

4 Using an angle-tipped brush, move onto a gold colour. Gently press colour over the chocolate eyeliner, above the lash line and in the inner corner of the eye. It will sit over the darker contour and give the smoky look with a more natural effect.

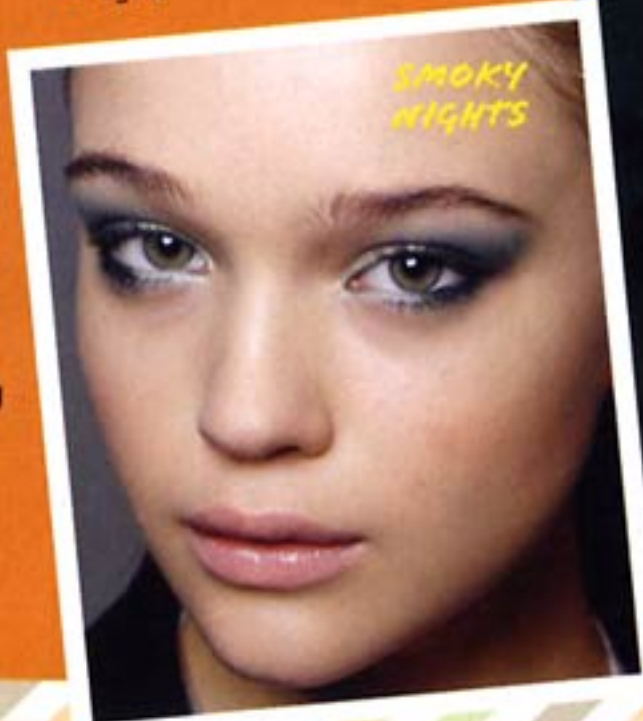
5 To finish, coat eyelashes top and bottom with black mascara, to add definition. **CATHRYN'S TOP TIP:** "Always make sure the eyelid has a base so the colour doesn't move or change throughout the day. It also gives the eye shadow more depth."

SMOKY NIGHTS

When you think smoky, you probably think this: dramatic, sexy, the kinda thing movies are made of. Creator of Proof Cosmetics, hair and makeup artist Dale Dorning (08 8276 2111) shows us how:

1 Begin by framing your eyes with a black kohl pencil along the top and bottom lash line. Then gently smudge and seal the colour with a dark eye shadow.

2 Using a round-tipped eye shadow brush, work a grey/ashy/silver shadow into the socket and over the lid. Then blend a darker matt shadow through the socket and along the lash line, and under the bottom lash line. This will help frame and balance the eyes.



3 Finish off with two coats of black mascara.

DALE'S TOP TIP: "Apply your eye makeup BEFORE your foundation so you can wipe away fall-out without having to reapply."

THE SUPER SMOKE

Amp it up for a party or prom and make your statement loud. Maybelline New York makeup artist Nigel Stanislaus (1300 369 327) tells us how... using the super-easy Maybelline NY Eye Studio Quad.

1 Take the lightest shade of the eye shadow quad and sweep it across the entire lid.

2 With the second darkest shade, contour the lid blending upwards towards the brow bone.

3 Smudge the darkest shade along the lash line and outer corners by blending it outwards.

4 Line the inner rim of your eye with a black kohl liner. Then, using the pencil, create a small triangle joining your top lash line to your bottom lash line. Smudge the triangle to the outer corner so that you get a soft elongated look.

5 Finish with a couple of coats of volume mascara.

NIGEL'S TOP TIP: "Don't just go for black! I've used many colours to achieve this look including fuchsia and emerald. Just make sure the colour has depth. And keep everything else light so you don't end up looking like a tragic ballroom dancer."



♥ The It Kit You can't smash a smoky eye without the right gear. And here it is:

